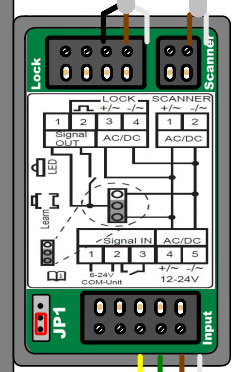
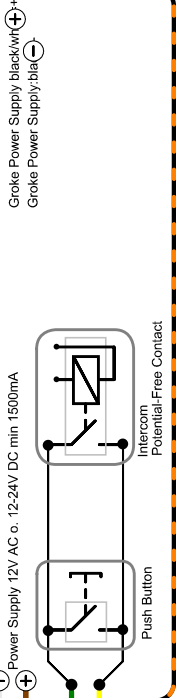


**Customer Connection**



Cable LIYY 4x0,34mm <sup>2</sup>	
Pin 1	ws -VCC (GND)
Pin 2	bn +VCC
Pin 3	gn Switch Input 1
Pin 4	gl Switch Input 1

G-U Cable	
br	+ VCC
gr/ws	- GND
sw/gn	+ Enable Signal

Colour Code	
black	sw
brown	br
red	rt
orange	or
yellow	ge
green	gn
blue	bl
violett	vi
grey	gr
white	ws
pink	rs

Änderungen		Name	Datum	Bezeichnung:
Name	Datum	gez.:	sle	12.08.2019
		gepr.:	to	12.08.2019
				ENTRAsys+ FD GU Security Automatic Detachable Cabel Transition 8pol Versions-Nr.: 1.3

